



LIGHT CONVEYOR BELT EQUIPMENT

RULER FOR CUTTING BELTS
IN A SAFELY MANNER

SAFETY RULER



Reveyron SAS - 247 route du Mas Rillier - Les Echets - 01700 Miribel - France

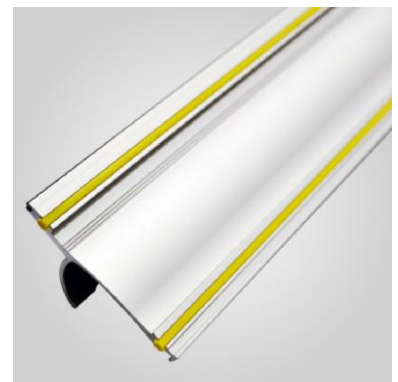
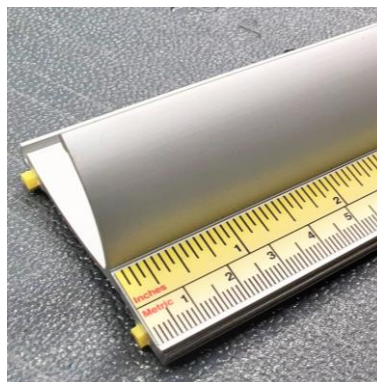
Tél : +33 4 78 91 81 01 - info@reveyron.com - www.reveyron.com

Capital 1 000 000 € - Siret 769 201 187 00010 - 769201187 RCS Bourg En Bresse - NAF 1396Z - TVA FR54 769 201 187 art 286 ter CGI



The “Safety Ruler” reduces accidental cuts. This tool is essential for any staff cutting light conveyor belts.

- The ruler is made of extruded aluminium, therefore it is light and rigid at the same time.
- The ruler’s underside has silicone inserts, allowing the ruler to grip on the surface and keeping it in place while cutting
- The edge of the cutting area is in stainless steel allowing the utility knife to slide smoothly and easily along the ruler
- Ruler with both metric and imperial scales



6 lengths available:

Product code	Length
SAFETY-RULER-600	60 cm / 24”
SAFETY-RULER-1000	100 cm / 40”
SAFETY-RULER-1500	150 cm / 60”
SAFETY-RULER-2000	200 cm / 80”
SAFETY-RULER-2500	250 cm / 100”
SAFETY-RULER-3000	300cm / 120”

OUR AIM: ZERO ACCIDENTS